

COMMUNITY EDITION

Building Your First Bot



WELCOME

Now that you have installed Automation Anywhere Community Edition Client, you are ready to build your first bot.

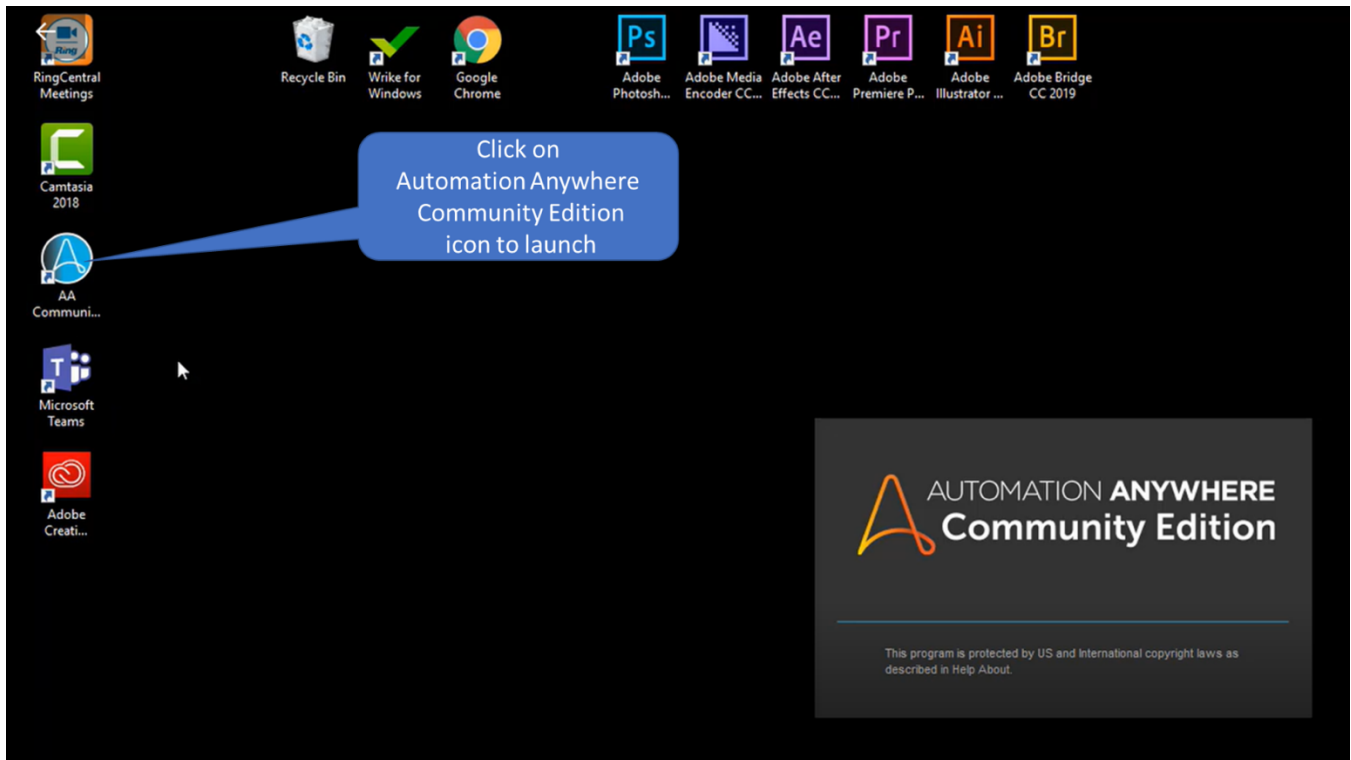
The purpose of this guide is to help you build a simple bot. By following the instructions, you will see how you easy it is to create bots with just a few keystrokes.

Let's get started!

Building Your First Bot

We will show you how to build your first bot; in this example we create a bot that will launch a Message Box.

To get started, double-click the AA Community Edition Client icon to launch the Automation Anywhere Client as shown in the screen below.



A login screen will appear. Please enter the user credentials that were sent to you in the "Welcome to Automation Anywhere Community Edition!" email, then click Login.

The image shows a Windows desktop environment. On the left, an email window is open, displaying a message from Marc Daniels. The email content includes:

- Subject: Welcome to Automation Anywhere Community Edition!
- Text: "To get started, access the Community Edition Control Room and login with these credentials:"
- Control Room URL: <https://xce0cd01.ce.automationanywhere.digital>
- Username: marc.daniels@automationanywhere.com
- Password: h388e0zh1

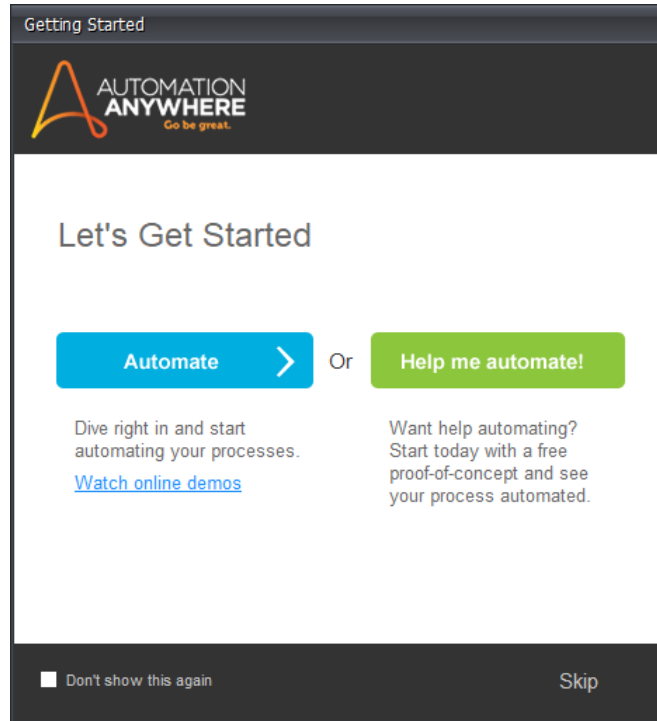
The URL, username, and password are circled in red. A blue callout box with a white background and a blue border contains the text: "Copy information from your Welcome email into the Login screen, then click Login button." A blue arrow points from this callout box to the login form on the right.

On the right, a "Client Login" window is open, showing the "Login to Control Room" form. The form fields are filled with the information from the email:

- Control Room:
- Authentication: User Credentials
- Username:
- Password:

A yellow "Login" button is visible at the bottom of the form, along with a "Forgot Password?" link.

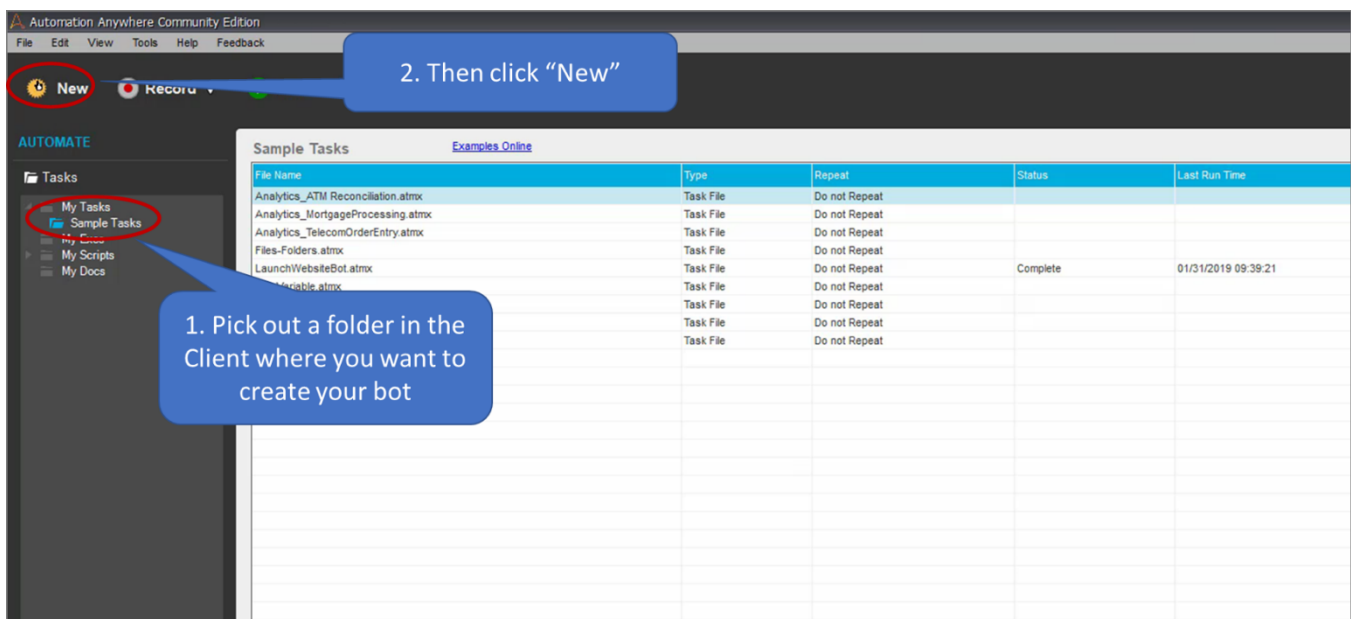
Next, you will see a screen (below) that gives you the choice between "Automate" and "Help me automate."



Choose Automate.

This takes you to the Automation Anywhere Community Edition main client window. (Note: You will see a window “Choose an Option” – dismiss this window for now.)

Now, click on the folder of sample tasks on the left-hand side of the screen. These are sample bots that are designed to help you get started. We are going to create a new bot. To do so, click on “New” in the upper left-hand corner of the screen (as circled in the screenshot below).



Then, a “Choose an Option” dialogue box will appear; select the “Workbench” option.

The screenshot displays the Automation Anywhere Community Edition interface. The main window shows a list of sample tasks with columns for File Name, Type, Repeat, Status, and Last Run Time. A dialog box titled "Choose an option" is overlaid on the interface, listing five options: Smart Recorder, Screen Recorder, Web Recorder, Workbench, and Help me automate!. The "Workbench" option is highlighted in green and circled in red. A blue callout box points to the "Workbench" option with the text "Select the 'Workbench' option".

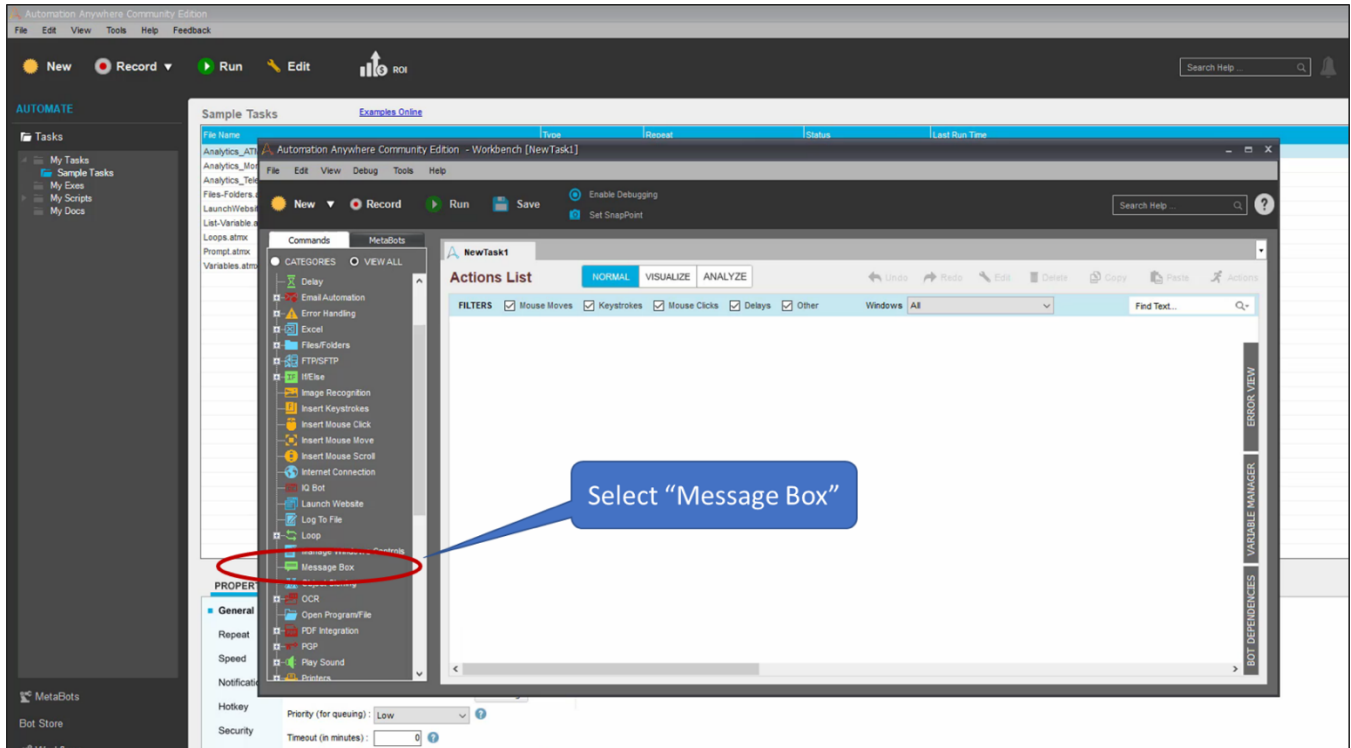
File Name	Type	Repeat	Status	Last Run Time
Analytics_ATM Reconciliation.atmx	Task File	Do not Repeat		
Analytics_MortgageProcessing.atmx	Task File	Do not Repeat		
Analytics_TelecomOrderEntry.atmx	Task File	Do not Repeat		
Files-Folders.atmx	Task File	Do not Repeat		
LaunchWebsiteBot.atmx	Task File	Do not Repeat	Complete	01/31/2019 09:39:21
LastVariable.atmx	Task File	Do not Repeat		
Loops.atmx	Task File	Do not Repeat		
Prompt.atmx	Task File	Do not Repeat		
Variables.atmx	Task File	Do not Repeat		

PROPERTIES SCHEDULE TRIGGER

General

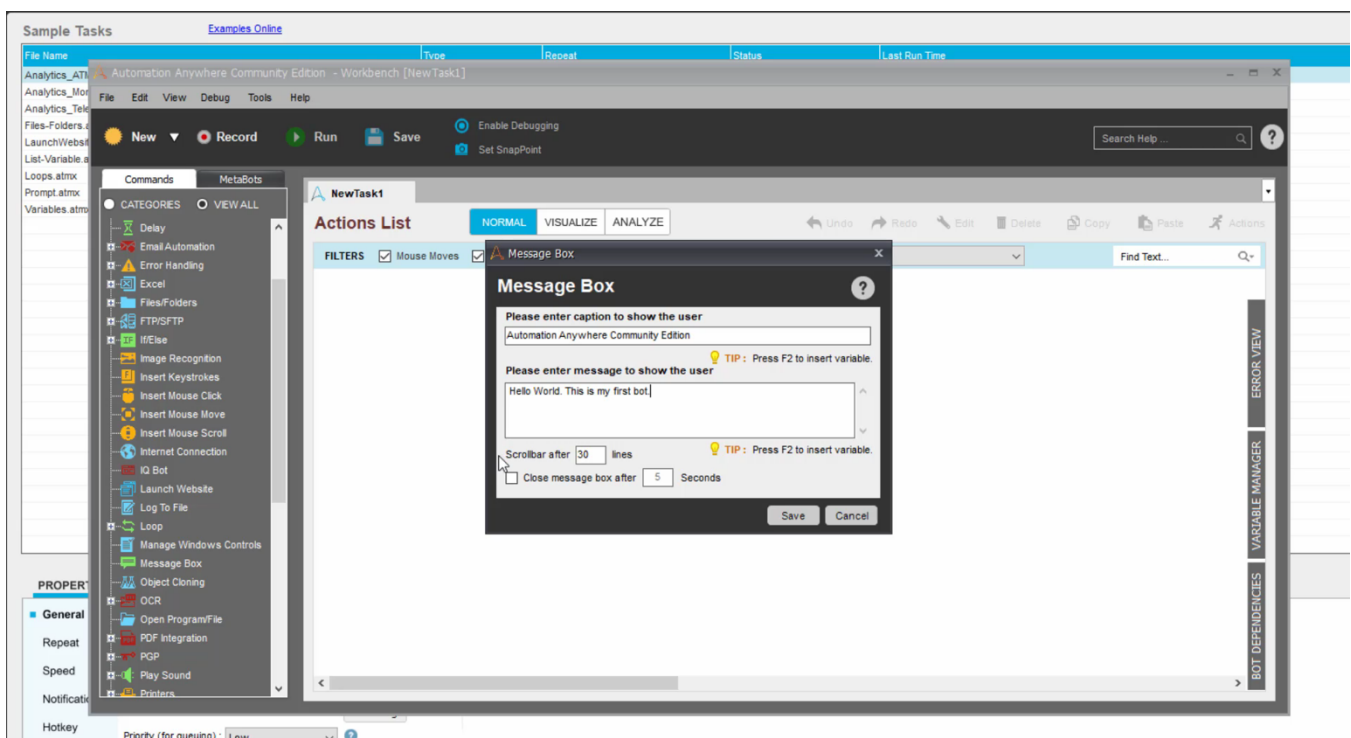
Repeat	File Name :	Analytics_ATM Reconciliation.atmx	Task Report
Speed	Created at :	08/30/2017 18:49:54	Mouse Clicks 0
	Status :	N/A	Keystrokes 0

Upon selecting the Workbench option, the Workbench window opens.



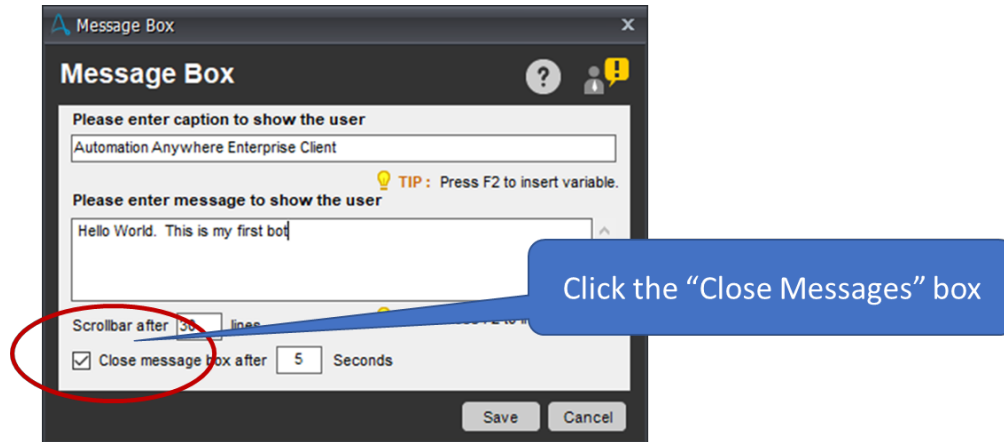
For our new task, we will create a Message Box instance. The Message Box is a useful programming tool to help developers communicate information to the end user and amongst each other.

Double-click on the Message Box command (circled above). This will launch the Message Box window on your screen.



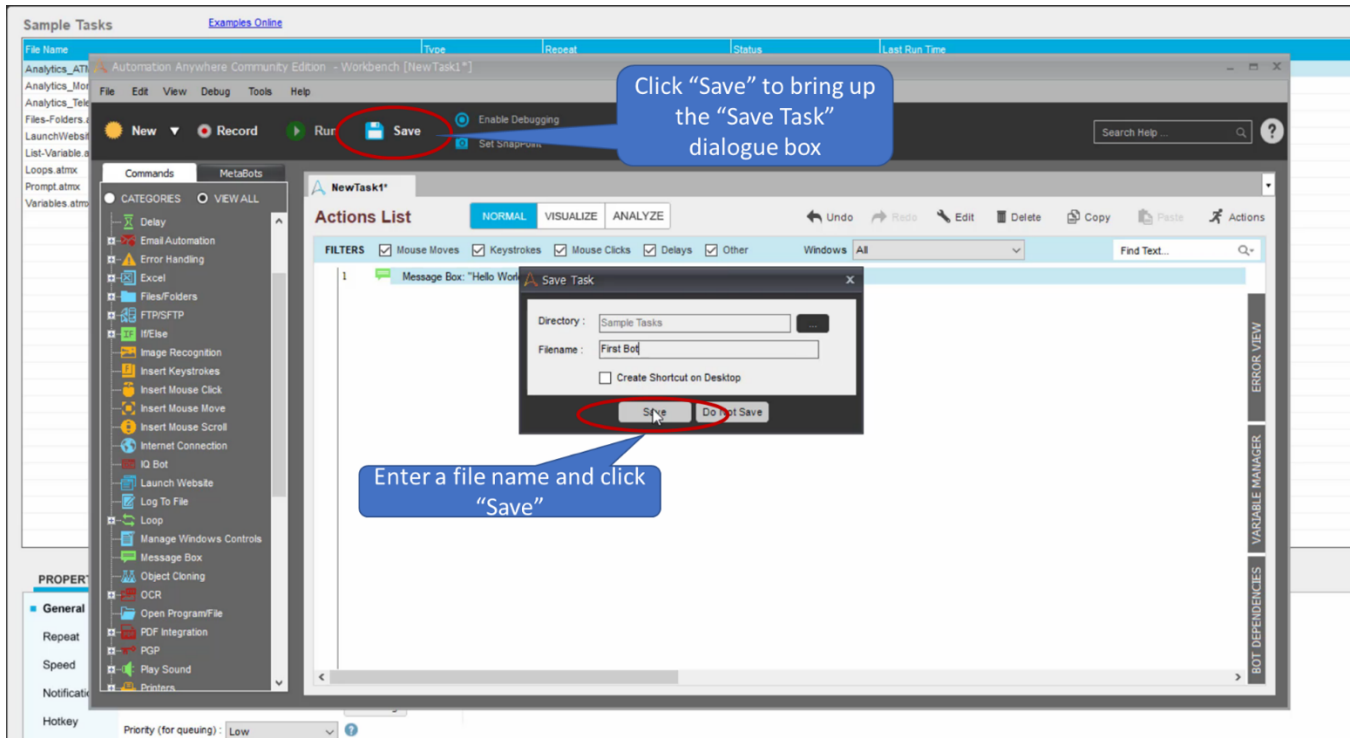
In the Message Box you can enter text. For demonstration purposes, we put "Hello World. This is my first bot." But you can put in anything that you like.

Click the checkbox "Close the message after five seconds." Then click Save.

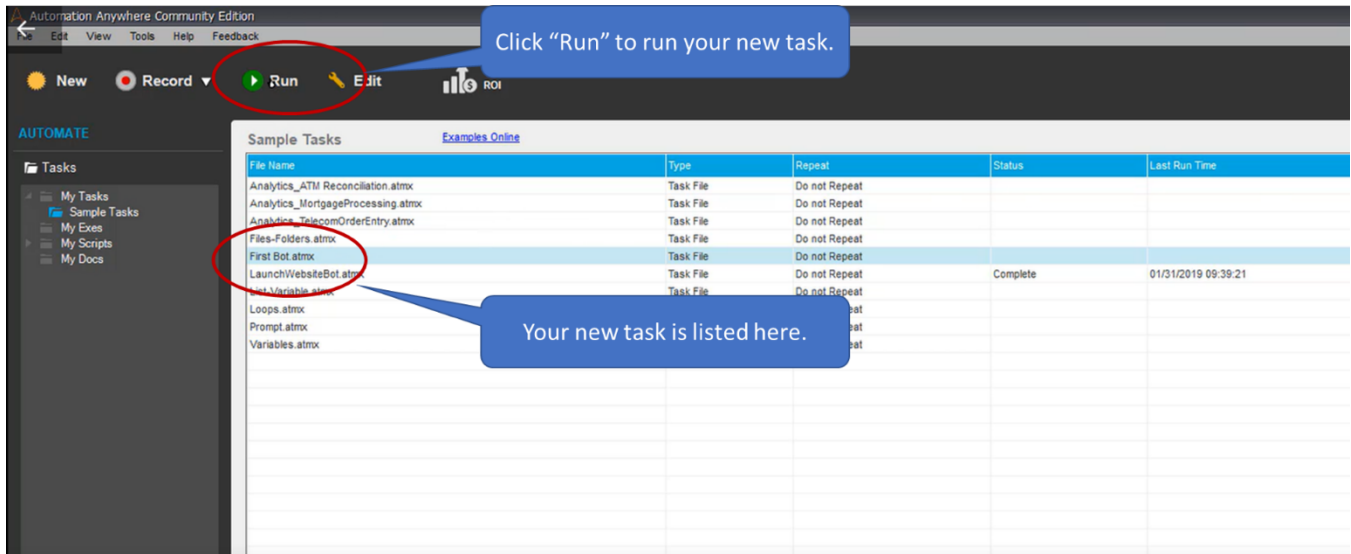


Then click Save. Clicking Save saves the Message Box command to the Workbench.

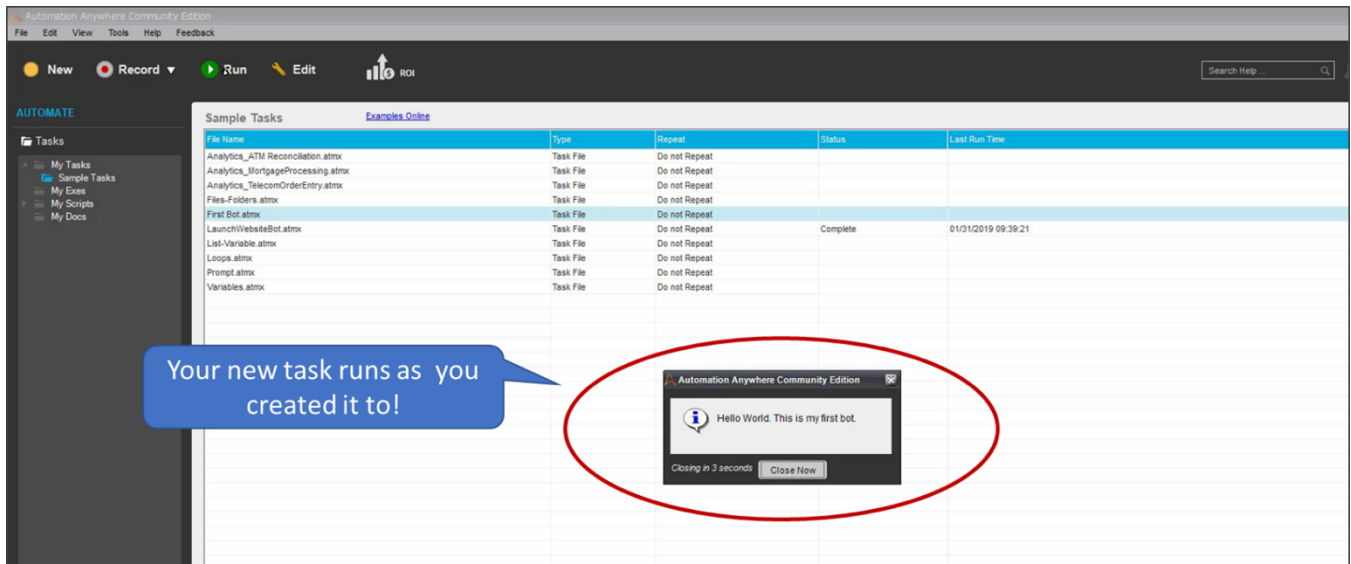
Click "Save" (the "disk" icon) to save your new task bot. The Save Task dialogue box will appear; enter the name that you wish to give your new bot.



You can now observe that your new bot is added to your list of tasks (see highlighted filename in screenshot below).



To run your new bot, make sure that the task is highlighted and click "Run" to run the task. Your new task will now run.



You will see that the Message Box will appear as you had created it for your new task.

Congratulations! You've just created and ran your first bot!

For more information

Access educational material, including whitepapers, blogs, videos, and much more, on our website resources.automationanywhere.com.